



THOMAS CRAPPER & CO

EST. 1861



ICONIC BRITISH MADE BATHROOMS

# Devoted to quality, for lasting luxury.

*This isn't merely a phrase, it's the ethos that underpins everything we do and everything we create here at Thomas Crapper & Co.*

Since 1861, we have designed and created bathrooms that have longevity at their heart. Each and every product is meticulously made, not only for the exceptional quality and craftsmanship it exudes, but also for the fact that it will give many years of luxurious service.

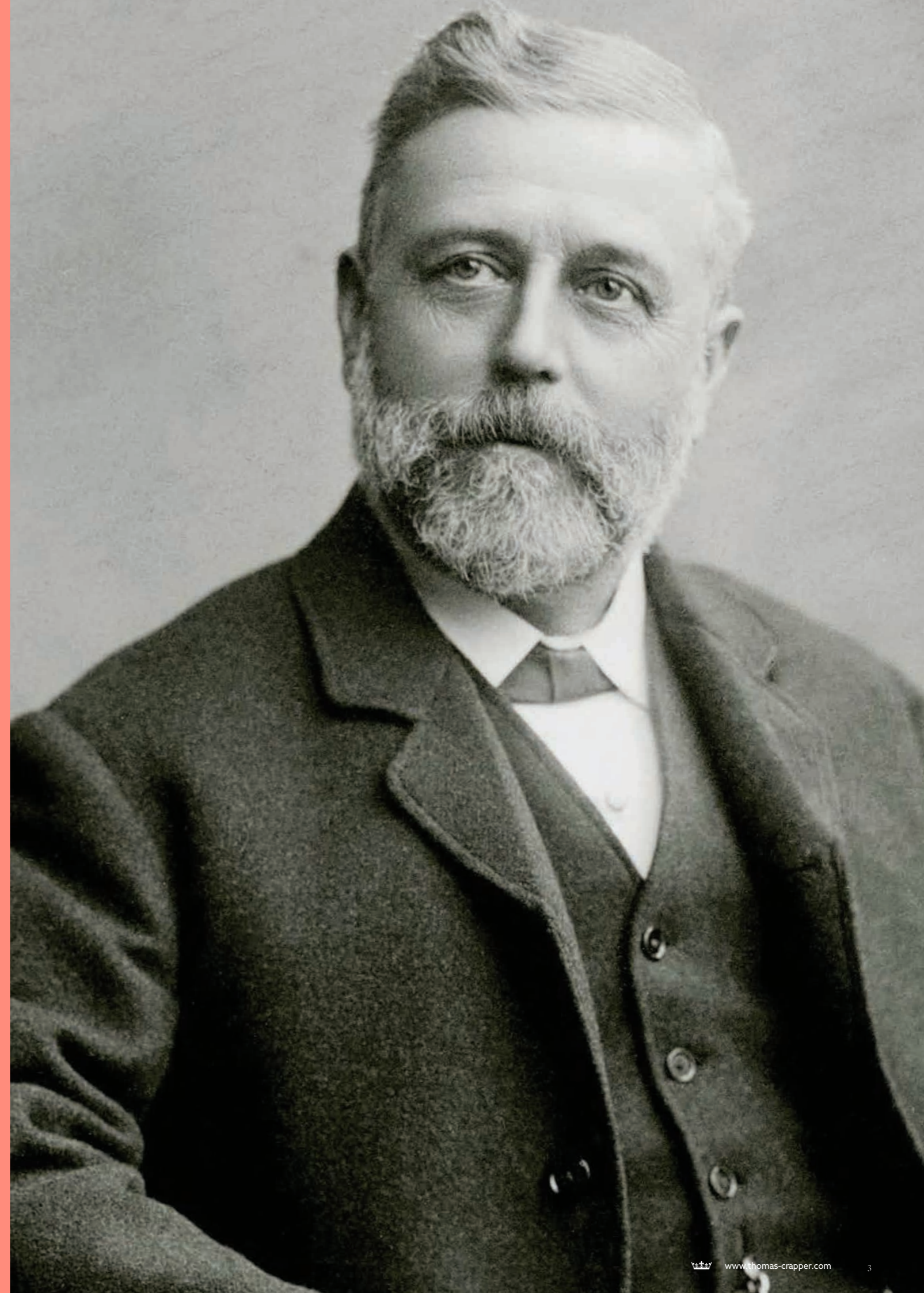
As the antithesis to today's throwaway society, we at Thomas Crapper strive to do things differently, creating products that are made responsibly, with a low carbon footprint using suppliers close to our home in Yorkshire, England.

For over 150 years, we have remained true to the belief that buying well means you buy only once, and it is this unerring devotion to quality that has seen the company awarded several Royal Warrants.

Sometimes, it's the little touches that can make all the difference. Our meticulous attention to detail leads us to create only the very finest products, which we are delighted to share with you in our brochure.

*Thos. Crapper*

Telephone: +44 (0) 1789 450522 | E-mail: [wc@thomas-crapper.com](mailto:wc@thomas-crapper.com)





# Rhapsody in blue

Our Indigo Blue furniture, shown here in the 1530mm version is available with undermount bowls or as a countertop version (shown over the page).

The carefully manufactured quartz tops are pre-cut, made to measure for the furniture. The Marmor brassware has beautiful marble handles, which perfectly complement the black or white quartz tops.

Our high-level 814 cistern, also in Indigo Blue, completes the room with a real sense of coordinated opulence.



Slide rail brackets showing the subtle 'Crown' branding detail.







# Complementary basins and furniture

Our Indigo Blue furniture is shown here with the optional antique mirror effect doors, ideal to add interest and a point of difference to your bathroom.

The twin Harwood basins are finished in a hardwearing silky touch glaze to complement the Indigo Blue furniture. Together with the wall-mounted Marmor wall mixer, with white marble handles the whole ensemble coordinates beautifully.







## A luxurious bathroom setting

An evocative bathroom setting shows our Marlborough round basin off to finest effect, especially when it is suspended on large brackets and set off beautifully with the Spitfire basin tap in our brushed brass finish.



The smooth, brushed brass of our Spitfire tap handle shows the attention to detail that is so important to us and has become the hallmark of Thomas Crapper luxury and craftsmanship.



The authentic styling of our large decorative brackets, finished in brushed brass. The unique pattern is taken from an original Victorian basin bracket and serves as a nod to our legacy and history.

Viceroy<sup>®</sup> WC set with Marlborough round basin and Spitfire taps.



# Marlborough

## round washbasin & pedestal

The Marlborough round basin offers the ultimate in design flexibility with its practical dimensions and a variety of tap-hole options.

The large bowl and useful tap ledge make the Marlborough ideal for family bathrooms, this basin can also be mounted on large brackets for a wall-hanging option.



Classical soap dispenser holder

Proudly manufactured in Britain and designed specifically to hold our superb range of liquid soaps and hand lotions.

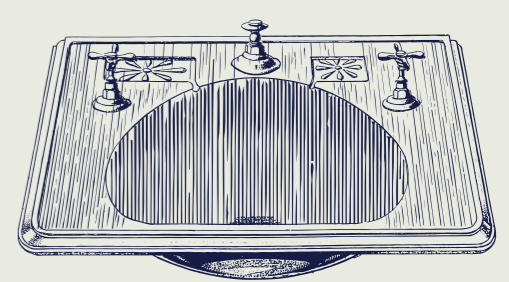






# Resolute basin

Inspired by an original design from our 1907 catalogue, the Resolute basin features striking Union flag soap recesses. It was originally named Lavatory No. 35, with a starting price of 79/6d.



The 1920 three tap-hole basin mixer

The 1920 three tap-hole basin mixer, showing the quality and detail that are so important to us here at Thomas Crapper.



# — brassware — Choose your ideal taps

## Choosing your taps

Our first piece of advice on choosing your perfect bathroom taps would be to liaise with your local Thomas Crapper retailer as they have the necessary experience and local knowledge of water pressures etc.

That said, we hope the following general advice will help you in making a choice of style and design for your new bathroom.



1920 Cross-head 3 tap-hole deck basin mixer

## Traditional and Classic

In keeping with our long and esteemed history, we have complete ranges of classically styled taps. The three ranges; **1920 Cross-head**, **1920 Lever** and the **Marlborough** collection all have a number of basin mixer and bath filling options.

These three ranges are available in Chrome, Nickel and unlacquered Polished Brass. All of these finishes will create a stunning look in your bathroom, with our unlacquered Polished Brass in particular offering a 'live' finish that will patina beautifully with age.



Marlborough cloakroom pillar taps

## Modern or Industrial

As we move our brand into the modern era demand for more industrial, mid century styling is getting stronger. We have therefore recently introduced three more contemporary styled ranges of taps; **Spitfire**, **Fontley** and **Marmor**. These ranges include wall and deck-mounted basin mixers, together with bath filling and showering options.

These brassware ranges are available in Chrome, Nickel and unlacquered Polished or Brushed Brass, with matching waste fittings and accessories available in all four finishes. As with our Traditional ranges, the Polished and Brushed brass options are unlacquered with a 'living' finish that will patina and age gracefully over time.



Fontley monobloc basin mixer



Marlborough 3 tap-hole mixer



Marmor monobloc basin mixer



1920 lever 3 tap-hole wall basin mixer



Spitfire 3 tap-hole deck basin mixer



Marlborough 635mm basins with washstands, high-level ceramic WC set and Leighton bath.

Twin Basin Luxury



## Marlborough

Based on authentic reproductions of original Victorian pieces, many of which are still proudly displayed in our company museum, our Marlborough range has been designed to accommodate modern plumbing practices without detracting from the legacy or beauty of the products.

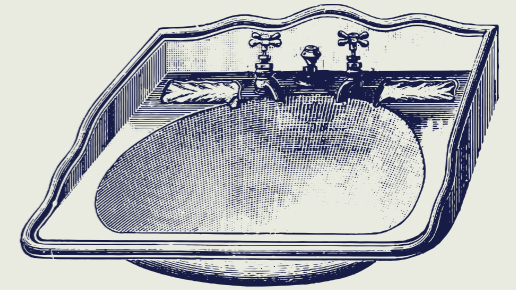
When you invest in a Thomas Crapper product you know you are purchasing not just a bathroom product but a true sense of history.





# Marlborough basin

The inspiration for our Marlborough basin is an original washbasin from our 1908 catalogue. Thomas Crapper products are often copied but seldom surpassed in quality or design.



Twin washstands in polished nickel



# Comtesse

basin & 1920 shower

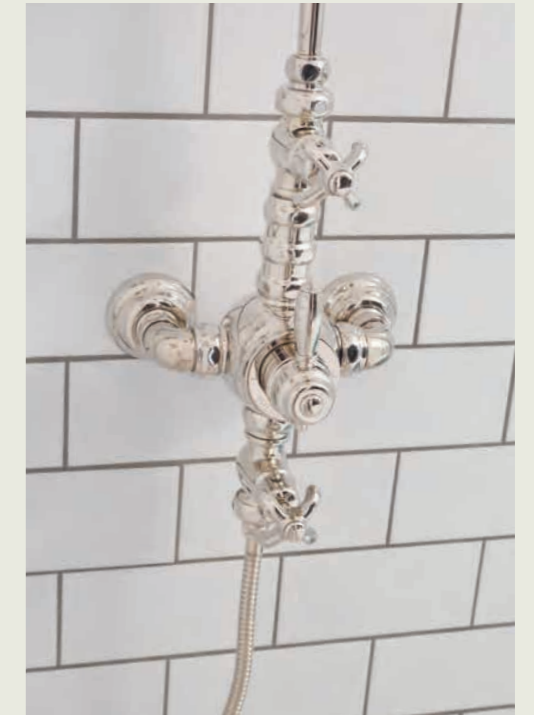
Based on an original 1920's French design, the flowing curves of the Comtesse basin are perfectly complemented by our exceptional 1920 brassware range.



Exquisite detailing sets this shower rose apart



A solid wooden handle shouts quality



For a luxurious shower experience, the bathroom setting can be enhanced with the 1920 exposed shower.



This image highlights the Comtesse's unique anti-splash roll in the basin.

1920 exposed shower valve, Comtesse basin with 1920 lever monobloc tap.



# A striking en-suite shower room



An atmospheric, contemporary bathroom scene serves to show that our products are not purely constrained to country cottages and Victorian town houses.

The style of a Thomas Crapper bathroom is truly timeless and looks every bit at home in a modern or industrial setting as it does in more traditional surroundings.

Cast and polished by hand, the aluminium Viceroy toilet cistern perfectly shows the skill of our craftsmen at its best and fitting beautifully in the same setting, the quartz washstand is exquisite with a walk-in shower arrangement and Viceroy toilet set.



1920 thermostatic shower

Viceroy<sup>®</sup> WC set with white quartz top and washstand, Thomas Crapper accessories and shower.



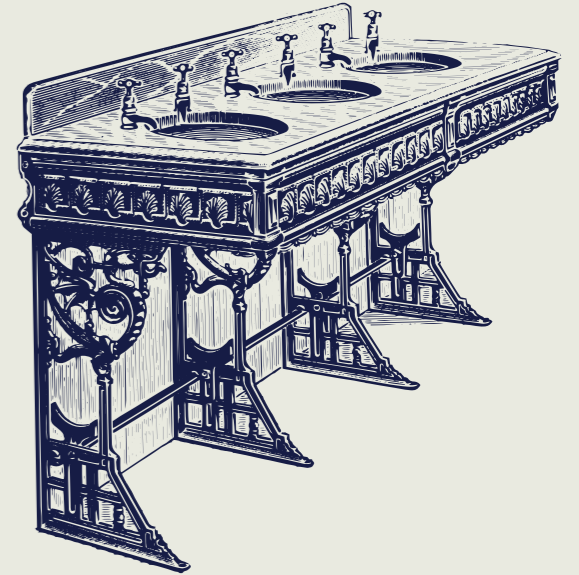


Viceroy WC set  
with polished cistern.

# Inspired practicality

We have taken inspiration from our original products and brochure images and brought this look right up to date with the use of modern materials such as this quartz countertop. These countertops are hand-made in Britain from a practical, modern alternative to the marble that would originally have been used.

Quartz is a man-made material that incorporates crushed quartz, silica and granite combined with hi-tech resins to create a beautiful product that is hard-wearing and will prove more resistant to staining than marble.



Single quartz washstand



## 1920 style...

Our 1920 showering products offer classical styling with the unmistakable mark of high-quality components. Whether you are looking for the theatre of a heavy pattern exposed shower or the more understated elegance of a concealed fitting, we are sure the 1920 range can answer your needs.



# Thomas Crapper

## Create the feel

With its knurled hand-wheel control and simple, minimal lines the Fontley two-way concealed shower epitomises the latest industrial style, which is currently very much in vogue. Available in Chrome, Nickel, Polished or Brushed Brass, the Fontley showers can be combined with the Montero shower ancillaries for the ultimate in flexibility. You can choose different sizes of shower heads, hand showers or ceiling mounted showering options, together with a wide range of high-quality accessories to create a showering haven in your own home.



If you are looking for mid-century chic and something a little different then why not consider our Spitfire shower? Available as a two-way concealed valve, with separate flow and temperature controls for your showering comfort.

Our Marmor range elegantly combines classic feel with modern looks.



# 814 cast metal

## low-level cistern in bespoke Mouse Grey

Our iconic model 814 cast cisterns are a faithful reproduction of an original Thomas Crapper cast iron cistern, which was unearthed a number of years ago during the refurbishment of a period Victorian property.

The piece was lovingly restored and then sent to an artisan master-founder for the creation of the tools and moulds that we still use to this day.

Unlike their cast iron predecessors, our model 814 cisterns are now manufactured using marine-grade aluminium alloy and are available in both high-level and low-level variants.

We also offer the 814 cisterns in our unique solid brass option.

The look is completed with our unique 'beer-pull' cistern lever arrangement. This style of cistern lever was used in rare examples of Edwardian cisterns; we liked the style so much that we asked our craftsmen to make the modern version you see in our range today.



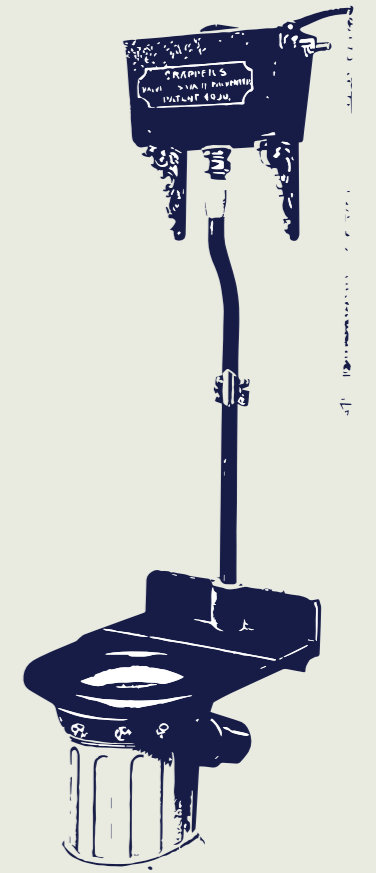




## 814 cast brass cistern

Our model 814 cast cisterns are faithful reproductions of an original cistern that is being carefully preserved in the Thomas Crapper company museum. The illustration, taken from our 1904 catalogue, shows the meticulous level of accuracy that we worked to in order to reproduce this classic piece of history.

Cast from solid brass and hand polished for many hours to create the rich, indulgent lustre you see here, this unique brass cistern will add true beauty to any bathroom design.



Marlborough polished brass paper holder

The authentic detailing of our Marlborough accessories is unparalleled.



# A personal touch

Offering the ultimate luxury for a truly bespoke bathroom, our cisterns are hand-made in Britain allowing us the opportunity of offering a highly personalised service for our customers. Your family name, property name or a unique message can be permanently cast into your Thomas Crapper cistern.

N.B. Length of message and good taste rules apply

What's more, we have now introduced as a special order our model 814 cast metal cisterns in any RAL colour, adding even more choice to our bespoke options.







# Downham basin

Carefully hand-crafted in Lancashire using age old skills and a time-honoured manufacturing process, the Downham is a stunning example of a fireclay cloakroom basin.

Available in a choice of designs and colours, the fireclay range is inspired by original fireclay basin designs from our early 1900's catalogues.



For a luxurious finishing touch, the Elegant ceramic soap dispenser is ideal for any bathroom or cloakroom.

814 low-level WC set with Comtesse pan and Downham basin with 1920 lever taps.



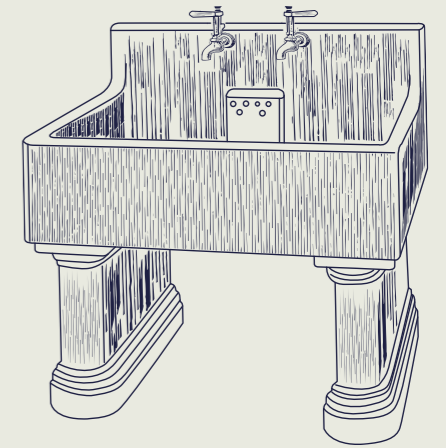
Downham basin with  
814 low-level WC set.



This image shows the subtle  
'Crown' logo on our Darby brackets.

# Sawley basin

Slightly more understated than their counterparts, which are accentuated by a Thomas Crapper plaque on the front, our Sawley and Chatburn basins proudly feature the signature logo as a permanent glazed transfer in the bowl.



Sawley fireclay cloakroom basin





A classic cloakroom with our  
NEW Bentham Indigo Blue basin

# Bentham

## basin

With compact but practical dimensions, the Bentham is one of our latest cloakroom basins and its striking style adds a unique beauty to any cloakroom or en-suite setting.

The basin is furnished with either a right or left-side single tap hole and is also available without a tap hole for wall-mounted brassware.

To tie-in with the latest design styles, we've recently introduced the Bentham in Indigo Blue and Forest Green. These darker hues perfectly coordinate with our polished brass or new brushed brass taps and fittings.



Bentham basin

Bentham basin shown here in semi-matt Forest Green, it is also available in Indigo Blue and Gloss White.



## Achieve the look

The style boards shown outline the initial design ideas for the roomset we created to showcase the new Bentham basin in Indigo Blue.

The design for the Bentham roomset was inspired by the vision of a cloakroom in a suburban home.

The house may well have a contemporary 'main' bathroom and en-suite, but this setting was visualised for homeowners who prefer a touch of theatre in their downstairs cloakroom.



# going suburban create the look



Bespoke contemporary mirror in a brushed brass finish to match the brassware and metal work.



Towel accent colour to complement our bathroom basin.



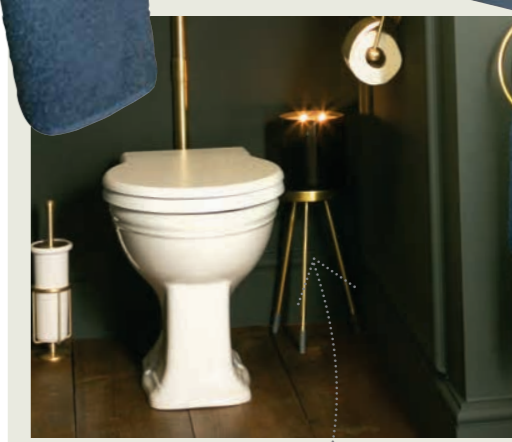
Exposed timber flooring, which complements the earth tones of the bathroom.



Our beautiful Elegant toilet brush adds class to any bathroom.

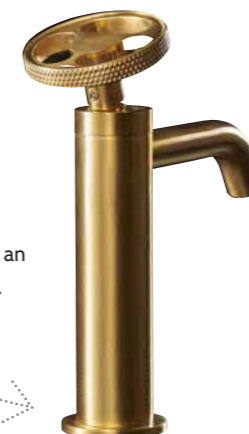


Farrow and Ball black blue colour paint for the walls really highlights the brushed brass items.



Add that extra detail with a modern candle and stand.

Our Thomas Crapper Fontley brassware adds an industrial on trend look.



Thomas Crapper's Elegant freestanding tumbler holder.





# Small but perfectly formed

Our Bentham basin has quickly become one of our best sellers, due to its compact but practical dimensions.

We have taken note of this success and have decided to build on it with the addition of this hand-made furniture unit.

The unit is supplied with useful internal shelf and soft-close hinges on the door. We can supply this beautiful unit in Indigo Blue, Forest Green and Oak to complement or contrast with the Bentham basins.



Interior of the Bentham cloakroom unit

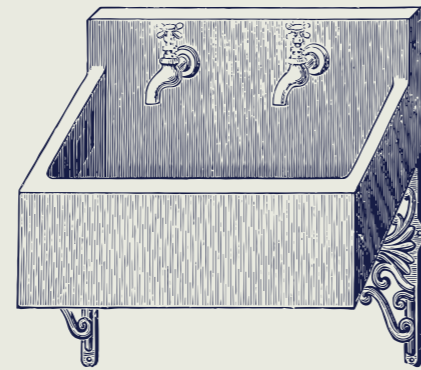


A distinguished cloakroom with our low-level 814 solid brass cistern.



# Horton basin

Inspired by one of the original fireclay basins from our 1901 catalogue, our new Horton basin is available in the latest colours; Indigo Blue, Forest Green and of course, White. For a more contemporary bathroom setting, the semi-matt finish is perfectly complemented by our polished brass taps.



Horton basin in Indigo Blue with polished brass Marmor tap

# Venerable back-to-wall

Although the Venerable back-to-wall WC pan is a recent addition to our range, the idea is steeped in history. Originally featured in our 1897 catalogue and using a high-level cistern and flush pipe, the concept at the time demonstrated the spirit of innovation that has become a hallmark of the Thomas Crapper name.

Our modern iterations of the back-to-wall toilets incorporate cisterns concealed behind the wall and are operated using a flush plate, available in Chrome, Nickel, Polished Brass or Brushed Brass.







# Marlborough cloakroom basin

Small but perfectly formed, the Marlborough cloakroom basin features a surprisingly deep bowl for such a compact basin. Available in White or Antique White and partnered with our cloakroom brackets and Marlborough cloakroom taps, this basin will add a touch of panache to any cloakroom setting.





# Thomas Crapper

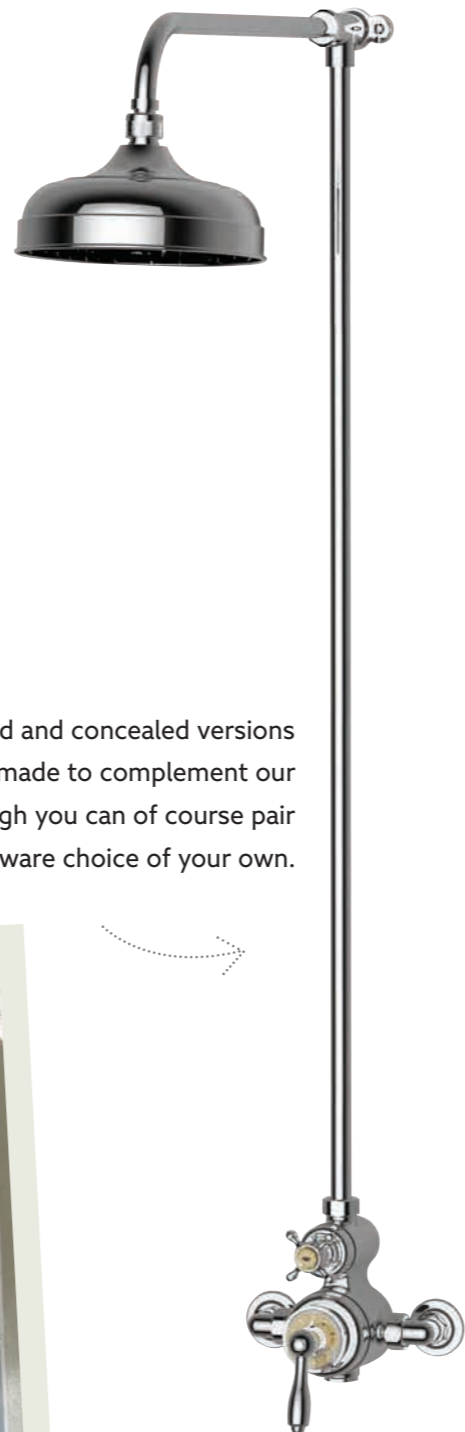
## Showering perfection

With a choice of traditional, modern or industrial styled showers and a variety of finishing options, we hope you will be able to find your ideal shower fitting from our extensive range.



The Ovington shower collection is based on a traditional design with beautiful authentic details to set it apart from others in the market.

There are both exposed and concealed versions and they are made to complement our Marlborough taps, although you can of course pair them with a brassware choice of your own.



1920 exposed shower

### The Marmor

The Marmor showers are defined by their simple, modern aesthetic, combined with real marble handles created to complement any marble elements in your bathroom.

The options include a thermostatic concealed shower valve, which can be combined with marble headed divertor valves to create a showering system that can be used to control a number of showering or bathing options when combined with the Montero shower ancillary range.





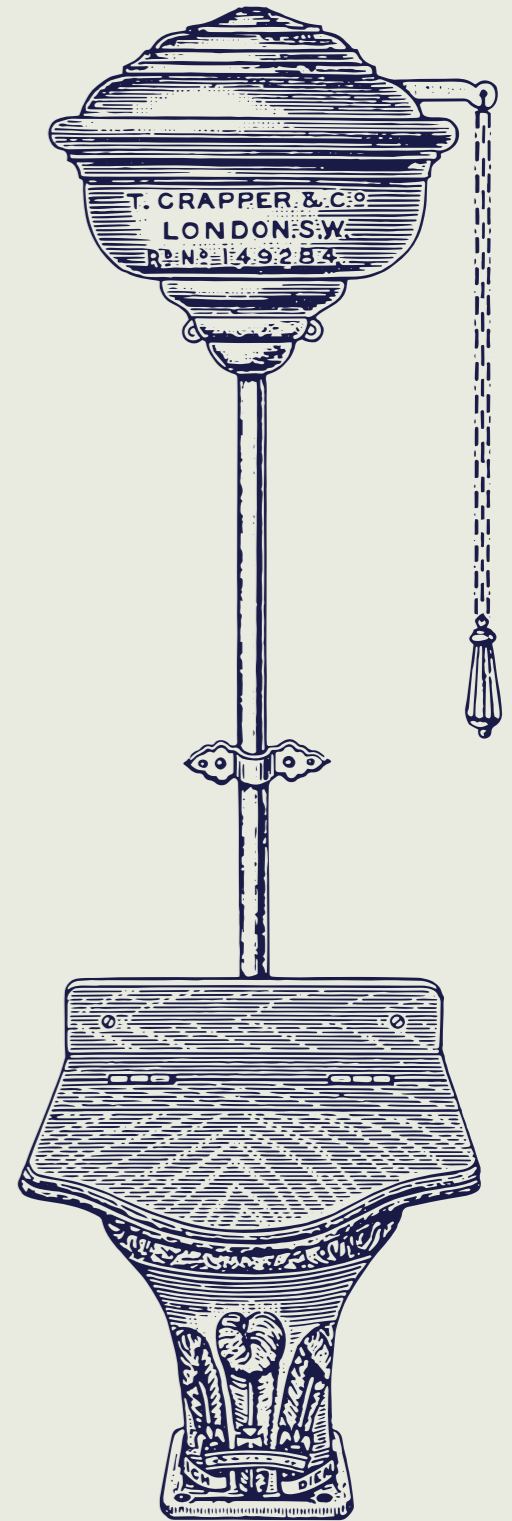
A beautiful attic en-suite showing the Harwood basin and 814 high-level toilet set.



## A smart use of space

A touch of luxury inspired by this image from our 1897 brochure. Although our pans don't include the Three Feathers design any longer the classic lines of the Venerable pan sit well in any surroundings.

Small spaces can be imbued with a touch of luxury by using our 814 high-level set and Harwood basin, shown here. With a relatively small projection the high-level set and Throne seat brings a wonderful point of difference and glamour to any smaller space. Coupled with our beautiful Harwood basin and 1920 taps, any smaller space can be maximised. As always, a range of colour finishes, such as the Blue Anthracite Harwood basin, and other options allow a touch of personalisation beyond the everyday.



Our 814 High-Level Cistern is available in Polished Aluminium which complements most design schemes.



Our Harwood basin is available in Blue Anthracite, above, White, main picture and Indigo Blue or Forest Green.



## A clean, modern look

This Scandinavian styled bathroom highlights the fact that Thomas Crapper products are equally at home in a modern bathroom design scheme as they are in a country cottage, manor house or even royal palace.

At 830mm, the Oak vanity unit is a useful size for family bathrooms, with handy storage space hidden behind a choice of shaker or antique mirrored doors. These units are available in Indigo Blue, Forest Green or Oak, which combine perfectly with our range of fireclay basins, also available in the same colours.





# 814 cast cisterns in any colour!

This is our iconic 814 cast metal cistern, shown here as the low-level version, the colour is Mouse Grey. There is an almost endless flexibility of choice available, for a small extra cost you can choose from over 2,000 RAL colours to achieve exactly the colour you would like for your bathroom design scheme.



814 cast metal cistern - Mouse Grey (RAL 7005)

The Black or White quartz countertops match the handles of the Marmor brassware range to complete the co-ordinated look of the bathroom.



# 'Scandi'

The 'Scandi' design feel tends to be defined by light walls, which emphasise light and a neutral colour palette with pops of colour such as the black marble handles of the brassware, the striking black quartz countertop and even the oak vanity unit and toilet seat.

In this room the black marble handles, clean white tiles and solid oak all combine to create a bright, uplifting bathroom scheme. Whereas the rich wood grain of the simple white flooring, together with the oak furniture and slatted window blind help to bring the feel of nature into this room, adding to the Scandinavian design style.



# Scandi create the look



White wood flooring highlights the texture of the Oak furniture cabinets, contrasting nicely.

Small details such as these figurines help finish a bathroom



Add shape and texture with a fancy vase



Why not match your towels to your cistern, or vice versa with our bespoke RAL option.



The marble handles of the Marmor brassware beautifully co-ordinate with the quartz countertops, ensuring a design-led finish.



The option of an antique effect mirror with Oak framing complements the vanity doors.







Comtesse WC set with Comtesse basin and pedestal.

## Comtesse suite

With a timeless elegance and grace, the soft curves of the Comtesse suite are perfectly complemented by the exquisite lines of our 1920 brassware and the Elegant range of accessories.



## Luxury apartment living with Thomas Crapper

Large marble effect ceramic tiles coordinated with our double quartz washstand can be used to stunning effect, creating a style that is equally at home in a contemporary city apartment as it is in a traditional luxury setting.



Our striking Spitfire taps feature a perfect blend of modernity with classic styling and are uniquely suited to create a statement to almost any bathroom setting.

Double quartz washstand with Spitfire taps, wall-hung Venerable pan and freestanding bath spout.





# Double basins

This double washstand features our beautiful quartz countertops combined with the stunning Spitfire brassware. These countertops are available in Black or White, both of which feature interesting and contrasting veins of colour.

The washstand metalwork is available in Chrome, Nickel, Polished or Brushed Brass to complete the luxurious look and feel.



Fine edge detail of our quartz countertops



# Thomas Crapper

## It's in the detail

The Marlborough range of accessories were originally created when one of our previous company Chairmen found a small selection of original Victorian bathroom accessories at an antiques salvage fair.



Our Elegant accessory range, like our other accessory ranges, is made from solid brass for long-lasting service and good looks.



The Classical range is all hand-made in Britain from solid brass with our brand name proudly engraved on the back-plates and are available in Chrome, Nickel and Polished Brass.



The clips that we supply with our high-level flush-pipes are cast from brass and have our name proudly emblazoned on one, with the second having a rubber buffer to protect both the seat and flush-pipe once installed.



The Viceroy cistern is unique in the bathroom market, being the only cast metal close-coupled cistern made. It is carefully manufactured in the UK and comes complete with our design registered 'beer pull' handle arrangement.



Our waste, plug and chain sets are made from more than ten individual components, all of which are individually polished or plated before being assembled by hand, here in the UK. The rubber plug is made slightly oversized so that as the rubber wears over the years, the plug will continue to fit the waste.



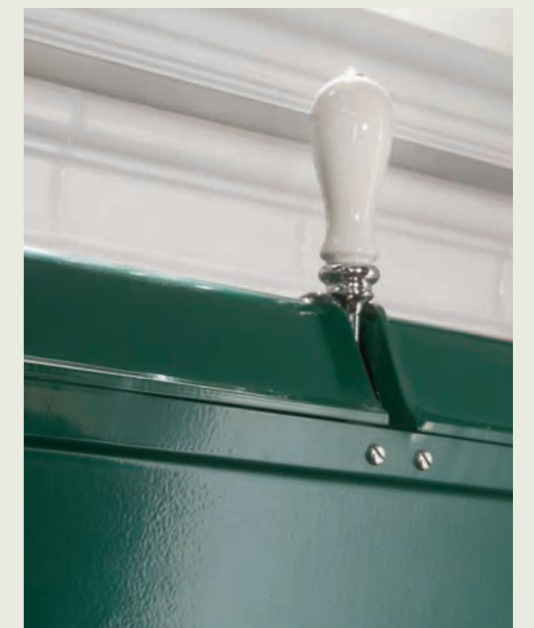


## A classic family bathroom

Our model 814 cast metal cistern toilet set, and Marlborough washbasin are accentuated perfectly against a backdrop of Victorian style tiles.



Marlborough basin suspended on large Thomas Crapper brackets.



The low-level 814 cistern features our unique 'beer pull' lever, which operates a water saving, British-made dual flush mechanism.

Low-level 814 cistern WC set with Marlborough washbasin.



# Thomas Crapper

## Co-ordination is key

We have a fantastic range of bathroom basins available in White, Indigo Blue and Forest Green. We have recently introduced a range of bathroom furniture in the same colours so you can coordinate furniture and basins within your bathroom. We have double or single vanity units and even a petite cloakroom unit to fit our best-selling Bentham basin.



Our Marmor brassware range has been developed to match the quartz countertops that we offer for furniture or washstands. The Marmor taps and showers have a choice of white or black marble handles and are available in Chrome, Nickel, Polished or Brushed Brass for your complete flexibility of choice.



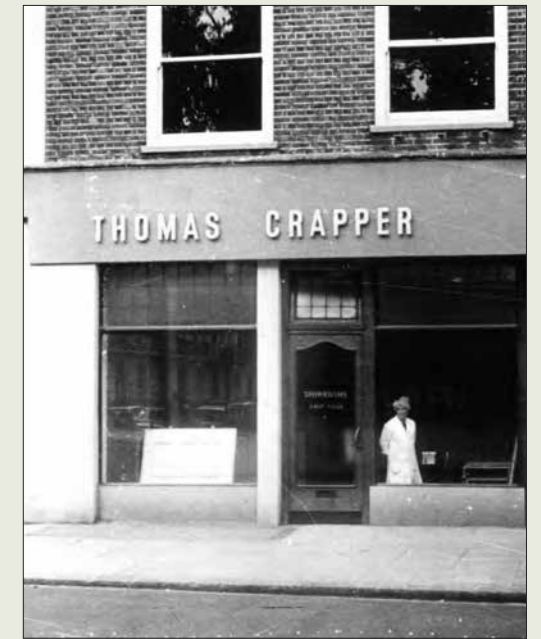
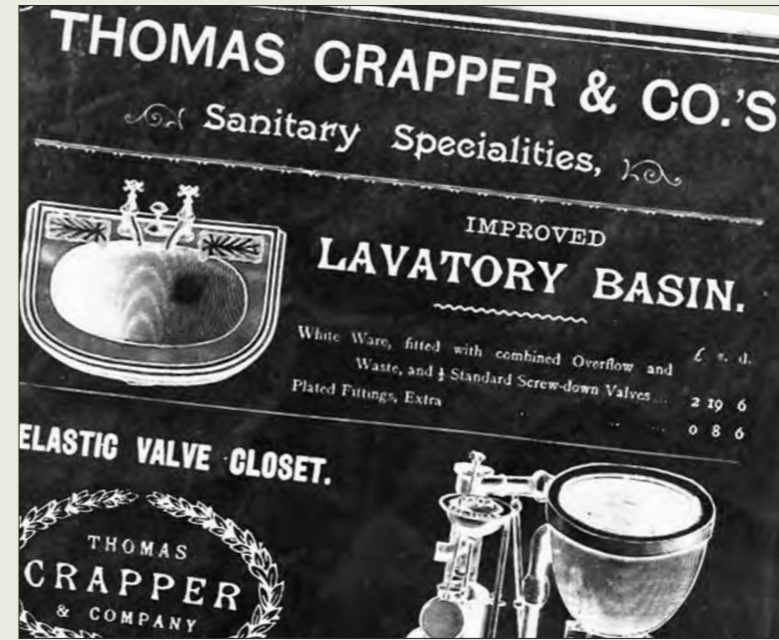
To continue our theme of coordinated attention to detail we have a range of cabinet handles, which match our taps in Chrome, Nickel, Polished or Brushed Brass. We even offer a handle with knurling detail to match our Fontley taps.





# Devoted to quality for lasting luxury

**1836** Thomas Crapper  
born in Thorne - Yorkshire.



Thomas Crapper & Co Ltd. receives its first patent for ventilating household drainage.

**1853**  
Thomas is apprenticed as a plumber to his brother George in Chelsea.

Thomas Crapper & Co Ltd. is established, based at Marlborough Cottages, Chelsea.

**1884**  
Marks & Spencer founded.

**1886**  
Thomas Crapper & Co Ltd. were engaged by The Royal Household to replace the sanitaryware and drainage at Sandringham House.

**1888**  
The company receives its second patent for an improved waste trap.

**1892**

**1893**  
Another patent, this time for a foot lever operated water closet.

The iconic 814 "valveless waste preventer" toilet cistern is introduced.

**1904**  
Thomas Crapper retired and sold the business to his nephew George Crapper and business partner Robert M Wharam.

The company is incorporated with companies house.

**1910**  
Thomas Crapper died and is buried in Elmer's End Cemetery, Beckenham, Kent.

**1911**  
The company receives its fourth Royal Warrant from His Majesty George V.

**1920**  
Formation of the League of Nations - forerunner to the United Nations.

**1920S**

**1925**  
Robert M Wharam Chairman of Thomas Crapper & Co Ltd. is appointed President of the Royal Warrant Holders Association.

**1937**

**1939 - 1945**  
World War II.

When RG Wharam dies leaving no heirs the company is sold to another London based sanitaryware company Boldings Ltd.

**1969**  
The assets of Boldings Group (including Thomas Crapper & Co Ltd.) are purchased by Mr Stephen Cowell.

**1861**

**1859**  
The origin of species by Charles Darwin first published.

**1881**

**1870**  
Thomas created the world's first bathroom showroom in Marlborough Road, Chelsea.

**1886**  
Thomas Crapper & Co Ltd. awarded its first Royal Warrant as a result of the work carried out at Sandringham House.

The company supply more bathroom products for Sandringham House, following a devastating fire and extra accommodation being built.

**1900**

**1901**  
The company receives its second Royal Warrant from HRH Prince of Wales. The company then receives its third Royal Warrant from His Majesty King Edward VII.

**1904**  
Ford model B first produced.

**1907**  
Thomas Crapper & Co Ltd. purchased 120 Kings Road, Chelsea for a new bathroom showroom.

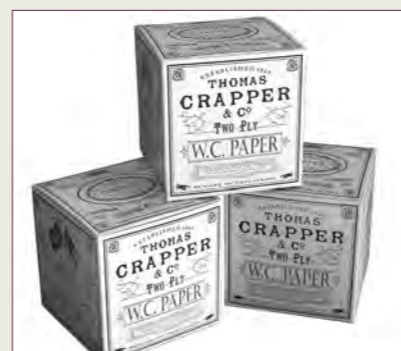
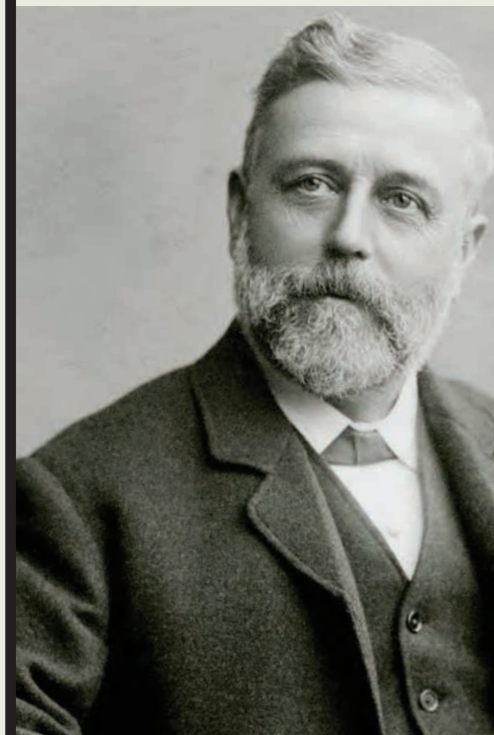
**1914-1918**  
The Great War.

The company continues to trade from 120 Kings Road building a strong reputation for high quality products and services.

The Marlborough works are sold and a large extension is built onto the back of 120 Kings Road for use as a factory and warehousing.

**1963**

**1969-1998**  
The company lies dormant under the ownership of Mr Cowell.







1999  
Simon Kirby buys the business and re-launches Thomas Crapper & Co Ltd. with a striking range of authentic products.

2000  
Hatfield Church (close to Thomas's birth place of Thorne, Yorkshire) installs a stained glass window featuring a toilet to celebrate Thomas Crapper's life.

2005  
Tim FitzHigham, the celebrated British comedian and author, rows the channel in a Thomas Crapper bath. A limited edition WC pan is created in honour of the fact.

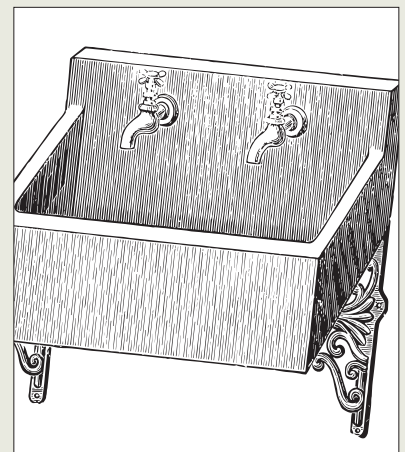
2011  
A Thomas Crapper toilet and washbasin are installed in Westminster Abbey in time for the Royal Wedding of HRH Prince William and The Duchess of Cambridge. At a similar time, a Thomas Crapper bathroom is installed in the Royal Suite of The Goring Hotel prior to the Duchess's pre-wedding stay at the hotel.

2016  
Thomas Crapper & Co Ltd. is purchased by Hartford Holdings Ltd., a family business based in Yorkshire.

2020  
Businesses are hit hard by a global pandemic. The Thomas Crapper team and their network of approved retailers strive to service clients with Thomas Crapper products, whilst complying with legal requirements.

2021  
The business continues to grow despite the global pandemic. Our approved showroom network grows to cover most areas of the UK.

2022  
A new brochure with new products and a refreshed brand identity is launched.



## Iconic British made bathrooms



# London 1870

## World's first bathroom showroom

This image from 1963 serves to remind us of our heritage, and the fact that Thomas Crapper opened the world's first bathroom showroom in Chelsea, London in 1870.

The showroom excelled in supplying high quality bathroom products with superb customer service. This ethos continues today and although we no longer own the Chelsea showroom we now have a carefully selected network of independent bathroom specialists all of whom continue in the spirit of the original 'Crapper' showroom.



Dirk Bogarde crosses the road in front of Thomas Crapper & Co's bathroom showroom in Harold Pinter's film 'The Servant'.

Picture credit: STUDIOCANAL Films Ltd.

For details of your local approved showroom please visit our website [www.thomas-crapper.com](http://www.thomas-crapper.com) or call +44 (0) 1789 450522. We'll be happy to advise you.







# Colour Guide

## Cast Metal Cisterns Available Colours:

-  Primed for Painting  
RAL 7035
-  Forest Green  
RAL 6028
-  'Crapper' Red  
RAL 3004
-  White  
RAL 9003
-  Indigo Blue  
RAL 5003
-  Matt Black  
RAL 9005
-  Polished Aluminium
-  Polished Brass

Notes: The letters and outline of the cartouche are supplied powder coated to match the cistern. They can be painted on site to your own requirements.

All our cast metal cisterns are supplied with a plastic liner to help reduce condensation and noise.

## Pottery (Toilets and Cisterns etc.) Available Colours:

-  White
-  Antique White

## Fireclay Basin Colours (inc White)

-  Blue Anthracite.
-  Forest Green
-  Indigo Blue

Notes: Not all pottery is available in every colour. Please check individual products for details.

## Woodwork (Seats and Pattresses) Available Colours:

-  Oak
-  Walnut
-  Mahogany
-  Charcoal Grey
-  White
-  Black
-  Forest Green
-  Indigo Blue

Notes: Throne seats are not available in Black, Blue or Green.

## Metalwork (Taps, Flushpipes etc.) Available Colours:

-  Polished Brass
-  Chrome Plate
-  Nickel Plate
-  Brushed Brass

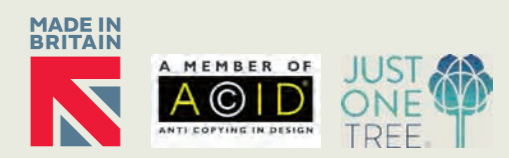
Notes: All our Polished Brass, Brushed Brass and Brushed is 'Live', i.e. not lacquered. This means that it will need cleaning from time to time to maintain its lustre.



We have introduced a service to offer our 814 cast metal cisterns in any RAL colour, as a special order service, adding to your bespoke option choices.

## Cast metal cisterns and brackets

We are proud that all our metal brackets and cisterns are cast by hand, they are not machine made. This means that on occasion there will be surface marks or imperfections, our brackets and cisterns are then polished by hand and most of these surface marks will be removed. We consider these to be part of the beauty and authenticity of our products, and as such we ask for your understanding of the hand-made nature of the products.



In association with Just One Tree, we commit to plant a tree for every wooden seat we sell.



## Warranties and General Product Notes (UK and Ireland)

All guarantees offered here are subject to the products being installed, maintained and cleaned in accordance with our guidelines.

If products are not installed, maintained or cleaned in this manner any guarantees may be rendered invalid. We strongly recommend that you use an experienced plumber, ideally one who is a member of a recognised trade body for the installation of your new Thomas Crapper products.

### Vitreous China (Pottery).

Vitreous china is an extremely durable, non-porous material; however, it is also a brittle material and should not be subjected to undue stress. Particular care should be taken when fitting basin waste fittings, taps and the screws for WC Pans. Thomas Crapper and Company pottery carries a 25-year guarantee against failures caused by manufacturing defects.

### Taps and Showers.

Thomas Crapper taps carry a 10-year mechanical guarantee against manufacturing defects. This guarantee excludes plated or polished surfaces and replaceable parts that are subject to normal use and wear such as washers, ceramic discs etc.

Our showers have a 2-year mechanical guarantee against manufacturing faults in material and workmanship.

### Furniture.

Thomas Crapper bathroom furniture is manufactured from a combination of solid and veneered wood panels and frames. Whilst every care is taken in the manufacture of this furniture, due to the nature of the products there may be slight variations in grain pattern and colour between individual pieces, this is considered part of the appeal of natural timber. Our furniture products are guaranteed against manufacturing defects for a period of 2-years.

### Basin stands.

Basin stands are guaranteed against manufacturing defect for a period of 5-years, this guarantee excludes plated or polished finishes.

### Seats.

Thomas Crapper toilet seats are carefully manufactured from solid timber, which is then lacquered for protection, however water should not be allowed to remain on the seat for any length of time. As timber is a natural product some variation in grain a colour may occur between individual pieces. Our toilet seats are guaranteed against manufacturing defect for a period of 2-years.

**NB: Please ensure the WC pan is installed level. If the WC pan is not level, it may cause the seat to split, this is NOT a manufacturing fault.**

### Cistern fittings.

All Thomas Crapper WC pans and cisterns are designed to flush at 6 litres in accordance with the required standards. Cisterns are supplied with the appropriate flushing valves, levers and flush pipes to ensure optimum performance. We cannot accept any responsibility for product performance where products have been badly installed or substitutions have been made. Cistern fittings are guaranteed against manufacturing defect for a period of 2-years.

## General Installation Instructions

Thomas Crapper products are manufactured to the highest standards, with each piece subject to many quality control steps throughout the manufacturing process. Vitreous china manufacturing is a craft, not a machine finished process; this means that some variation may occur between individual pieces of sanitaryware, this is perfectly normal and within the accepted industry quality parameters. Please see below some important notes on particular details regarding the installation of our products.

### Screws.

We supply BRASS or STAINLESS STEEL slotted-head screws, which cannot rust, with our products. Modern, cross-head screws should not be used, as most cross-head screws are made of ordinary steel; they will corrode over time (even if they are zinc plated) and damage can be caused to the product. This applies even to screws that are out of sight; for example, inside the cistern.

### Inlet valve.

The cistern inlet valve must be adjusted so that the cistern fills to the water line, marked 'WL' or Water Line inside, this is to ensure that the cistern meets water regulations.

### Brackets.

The brackets for our cisterns, basins and seats are 'handed', that is, one is made to be seen from the left, while the other is cast to be viewed from the right. Please ensure that they have been installed correctly.

### Water-flow restrictor.

A water-flow restrictor is supplied in the flushing fitting pack of the high-level cisterns. This plastic disc (with a hole in the centre) should be fitted into the inlet hole of the WC pan before fitting the translucent 'finned' internal connector, which is supplied with the WC.

## General Care Instructions

We suggest that all Thomas Crapper & Co Ltd. products are installed in compliance with current Water Regulations by a qualified plumber, preferably one who is registered with a recognised trade body.

### Vitreous china items (pottery).

These should be cleaned using a mild cream cleaner, it should be applied using sponge or damp cloth, then rinsed thoroughly using clean water. Do not use abrasive or highly caustic cleaners (e.g. Mr Muscle). We recommend that you do not place bleach or water colouring blocks inside the cisterns.

### Nickel and Chrome plated items.

Plated items should be cleaned using warm, soapy water, then dried with a soft cloth. Occasionally, a non-abrasive brass or chrome polish can be used if necessary to remove stubborn stains. Please do not use bleach, de-scaling solutions or abrasive cleaning products as these may damage the plated surface.

### Polished Brass items.

These products are made of solid brass, which is hand-polished. No lacquer or plating has been applied. This finish will need regular polishing to maintain its lustrous shine. We suggest the use of a proprietary brass polish, such as Brasso.

### Wooden items.

Products such as wooden seats should be cleaned with a mild antibacterial liquid on a damp cloth. The seat should be dried with a separate dry cloth. Please do not soak or use bleach. Splashes or condensation should be wiped from the surface as soon as possible. Once fully dry after cleaning, the seat can be polished with a non-silicone wax.

## Painting Instructions.

### 814 Cast Metal Cisterns (Primed ready for painting).

We suggest that you begin with an oil-based under-coat, followed by one or two applications of an oil-based top-coat. We recommend 'eggshell' or 'satin' finish, but gloss can also be used if preferred. Several coats applied with a brush looks more traditional if you require an authentic finish.

### Picking-out the letters on the front of the body.

It is not essential to paint the letters on the front of the cistern as they are cast to stand proud of the cistern body and are usually quite legible. If desired, however the letters can be highlighted by painting in a contrasting colour. We have found the best results from using cellulose paint pens, available to buy from most major stationers, online or from our office (Telephone +44 (0) 1789 450522).

® = Registered Trade Mark

© = Registered Design



## Photographic Credits:

All tiles used in photography are from the Thomas Crapper tile range, with the exception of some tiles used in the Leighton bath set.

Cast Iron Radiator on the brass cistern cloakroom set: Kindly loaned by UK Architectural Antiques Ltd. Hill Farm, 84 Hayfield Hill, Cannock Wood, Staffs, WS15 4RU.

Paints used on many of the photographic sets throughout this brochure are from the Crown Paints Period Collection.

Wall panel details and ceiling roses for many sets supplied by:

Orac UK  
Unit 8 City Business Centre,  
6 Brighton Road, Horsham RH13 5BB  
@ OracDecor UK (Insta)  
www.oracdecor.com  
T: 01403 240102

Aqata:  
With thanks for the kind supply of the walk-in shower glass screen on pages 4-5.  
Aqata, Brookfield, Harrowbrook Industrial Estate, Hinckley, Leicestershire LE10 3DU  
Email: sales@aqata.co.uk  
Telephone: 01455 896500

Brick effect panels on the brass cistern cloakroom set and the decorative plasterwork on the double washstand set kindly supplied by:

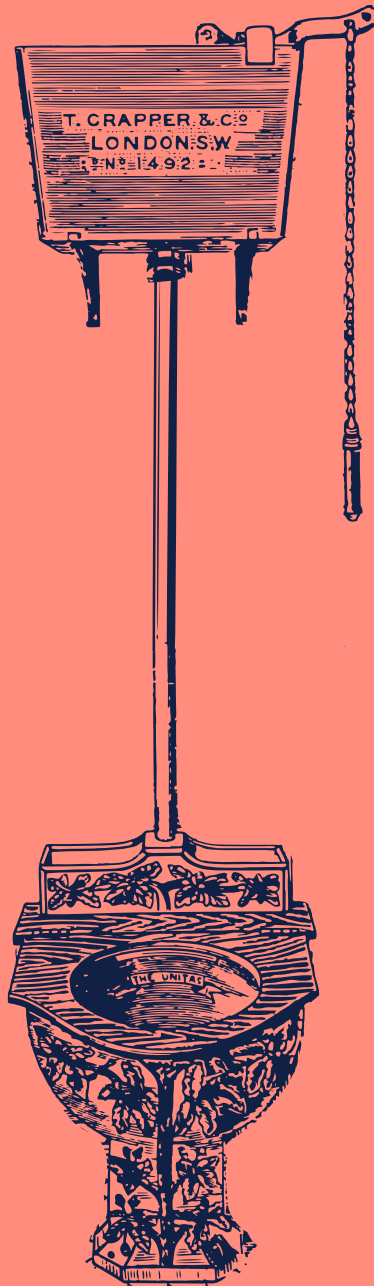
Designer Walls and More  
www.designer-walls.co.uk

Traymate:  
With thanks for the kind supply of the walk-in shower tray on pages 4-5.  
Traymate Products Limited (TMUK)  
Ensign Estate, Botany Way, Purfleet, Essex RM19 1TB  
Email: info@traymateproducts.com  
Telephone: 01708 869 490

Thomas Crapper & Co. Ltd. strive for excellence and perfection in all our work. This brochure has been printed to the highest standard available and we would ask customers to be aware that colour reproduction is as accurate as the printing process allows. We reserve the right to change prices and specifications. All our goods should be installed by a suitably qualified person. Please inspect all goods before installation because we cannot accept liability for any issue regarding quality, colour, texture, shade and finish once the product has been installed. Any prices shown include VAT. E&OE. November 2022. Ref: 1029080







THOMAS CRAPPER & CO

EST. 1861

T: +44(0)1789 450522  
[www.thomas-crapper.com](http://www.thomas-crapper.com)